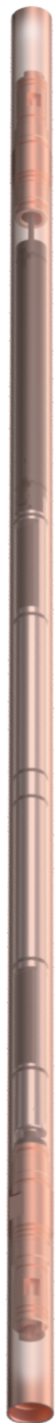


SK-AGR Azimuth Gamma

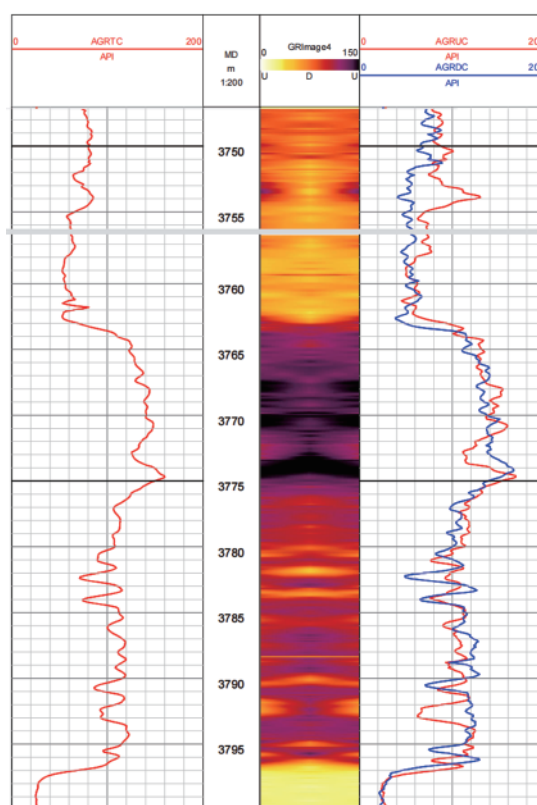


SK-AGR is a probe tube type azimuth gamma tool compatible with the Tensor standard, with a max. working temperature of 175 °C and max working pressure of 20000 Psi.

The azimuth gamma probe tube while drilling is suitable for operations in highly-indinational and horizontal wells. In the construction of complex formations and thin oil layers, it can accurately indicate the direction of approaching or crossing the boundary, providing a basis for geological engineers to plan borehole trajectory, and effectively improving the drilling rate.

Product Features

- Sensitivity: 1 CPS/API
- Measurement accuracy: +/- 5%@150C
+/- 10%@175C
- Measurement sectors: 16 sectors
- Measurement range: 0 ~1000 API
- Max. Rotating speed: 240 RPM
- Max. working pressure: 25000 PSI
- Working voltage: 18 ~36 V
- Vibration: 25g rms
- Impact: 1000g /0.5ms
- Mechanical dimensions: $\phi 47.6\text{mm}$ *2050mm



240 RPM

Max. working speed

25000psi

Max. working pressure

175°C

Max. working temperature

Temperature	Type	Temperature (°C)	Limiting Temperature (°C)	Sensitivity (cps/API)	Contrast Ratio
SM-AGR	Dual focus	150	165	1	1:3.5
SH-AGR		175	185		